

## Product Datasheet

### pyruvate dehydrogenase (lipoamide) $\alpha$ 1 Mouse mAb

Catalog No: AB3131

Reactivity: Human, Mouse

Isotype: Mouse IgG1

Applications: WB, ICC/IF



www.abways.com

#### Information

**UniProt ID:** P08559

**All Names:** Pyruvate dehydrogenase E1 component subunit alpha, somatic form; mitochondrial; PDHE1-A type I; PDHA1; PHE1A;

**Form:** Liquid

**Storage instructions:** Store at +4°C short term. Store at -20°C long term. Avoid freeze / thaw cycle.

**Storage buffer:** pH 7.4, 150mM NaCl, 0.02% sodium azide and 50% glycerol.

**Purity:** Affinity-chromatography

**Immunogen:** A synthesized peptide

**Molecular Wt.:** 43KDa

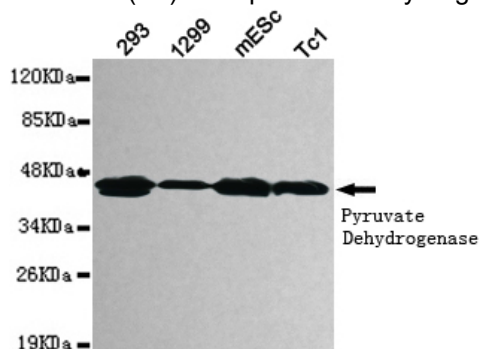
#### Application

WB 1:1000

ICC/IF 1:100

#### Background

The pyruvate dehydrogenase complex catalyzes the overall conversion of pyruvate to acetyl-CoA and CO<sub>2</sub>. It contains multiple copies of three enzymatic components: pyruvate dehydrogenase (E1), dihydrolipoamide acetyltransferase (E2) and lipoamide dehydrogenase (E3).



Western blot detection of pyruvate dehydrogenase (lipoamide) alpha 1 in 293, 1299, mESC and Tc1 cell lysates using pyruvate dehydrogenase (lipoamide) alpha 1 mouse mAb (1:1000 diluted). Predicted band size: 43KDa. Observed band size: 43KDa.

For Research Use Only. Not For Use In Diagnostic Procedures.

www.abways.com