

## Product Datasheet

# 14-3-3 $\beta$ Antibody

Catalog No: AY1001

Reactivity: Human, Mouse, Rat

Isotype: Rabbit IgG

Applications: WB



[www.abways.com](http://www.abways.com)

### Information

**UniProt ID:** P31946

**All Names:** 14-3-3 protein beta/alpha, 1433B, 143B, KCIP-1, Protein 1054, Protein kinase C inhibitor protein-1, YWHAB

**Form:** Liquid

**Storage instructions:** Store at +4°C short term. Store at -20°C long term. Avoid freeze / thaw cycle.

**Storage buffer:** pH 7.4, 150mM NaCl, 0.02% sodium azide and 50% glycerol.

**Purity:** Affinity-chromatography

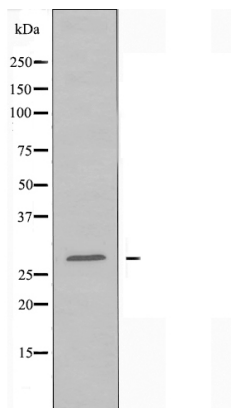
**Immunogen:** A synthesized peptide

**Molecular Wt.:** 28 KD

### Application

WB 1:500~1:1000

### Background



Western blot analysis of extracts from HepG2 cells and Jurkat cells, using 14-3-3  $\beta$  antibody.

**For Research Use Only. Not For Use In Diagnostic Procedures.**

[www.abways.com](http://www.abways.com)