

Product Datasheet

KPNA2 Antibody



Catalog No: CY7210

Reactivity: Human Mouse Rat

Isotype: Rabbit IgG

Applications: WB FC

www.abways.com

Information

UniProt ID: P52292

All Names: QIP2; RCH1; IPOA1; SRP1alpha;

Form: Liquid

Storage instructions: Store at +4°C short term. Store at -20°C long term. Avoid freeze / thaw cycle.

Storage buffer: pH 7.4, 150mM NaCl, 0.02% sodium azide and 50% glycerol.

Purity: Affinity-chromatography

Immunogen: A synthesized peptide

Molecular Wt.: 58kDa

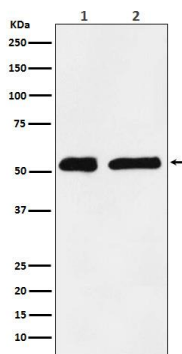
Application

WB 1:1000~1:5000

FC 1:50

Background

Functions in nuclear protein import as an adapter protein for nuclear receptor KPNB1. Binds specifically and directly to substrates containing either a simple or bipartite NLS motif.



Western blot analysis of KPNA2 expression in (1) HeLa cell lysate; (2) C6 cell lysate.

For Research Use Only. Not For Use In Diagnostic Procedures.

www.abways.com