

## Product Datasheet

# Placental Protein 14 / PAEP Antibody



Catalog No: CY9321

Reactivity: Human

Isotype: Rabbit IgG

Applications: WB

[www.abways.com](http://www.abways.com)

### Information

**UniProt ID:** P09466

**All Names:** GdA; GdF; GdS; Glycodelin A; Glycodelin; Glycodelin F; Glycodelin S; PAEG; PAEP; PEG; PEP; Placental protein 14; PP14;

**Form:** Liquid

**Storage instructions:** Store at +4° C short term. Store at -20° C long term. Avoid freeze / thaw cycle.

**Storage buffer:** pH 7.4, 150mM NaCl, 0.02% sodium azide and 50% glycerol.

**Purity:** Affinity-chromatography

**Immunogen:** A synthesized peptide

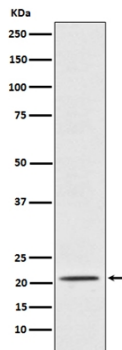
**Molecular Wt.:** 24 kDa

### Application

WB 1:500~1:2000

### Background

This protein is, quantitatively, the main protein synthesized and secreted in the endometrium from mid-luteal phase of the menstrual cycle and during the first semester of pregnancy.



Western blot analysis of Placental Protein 14 / PAEP expression in TPA-treated K562 cell lysate.

**For Research Use Only. Not For Use In Diagnostic Procedures.**

[www.abways.com](http://www.abways.com)